

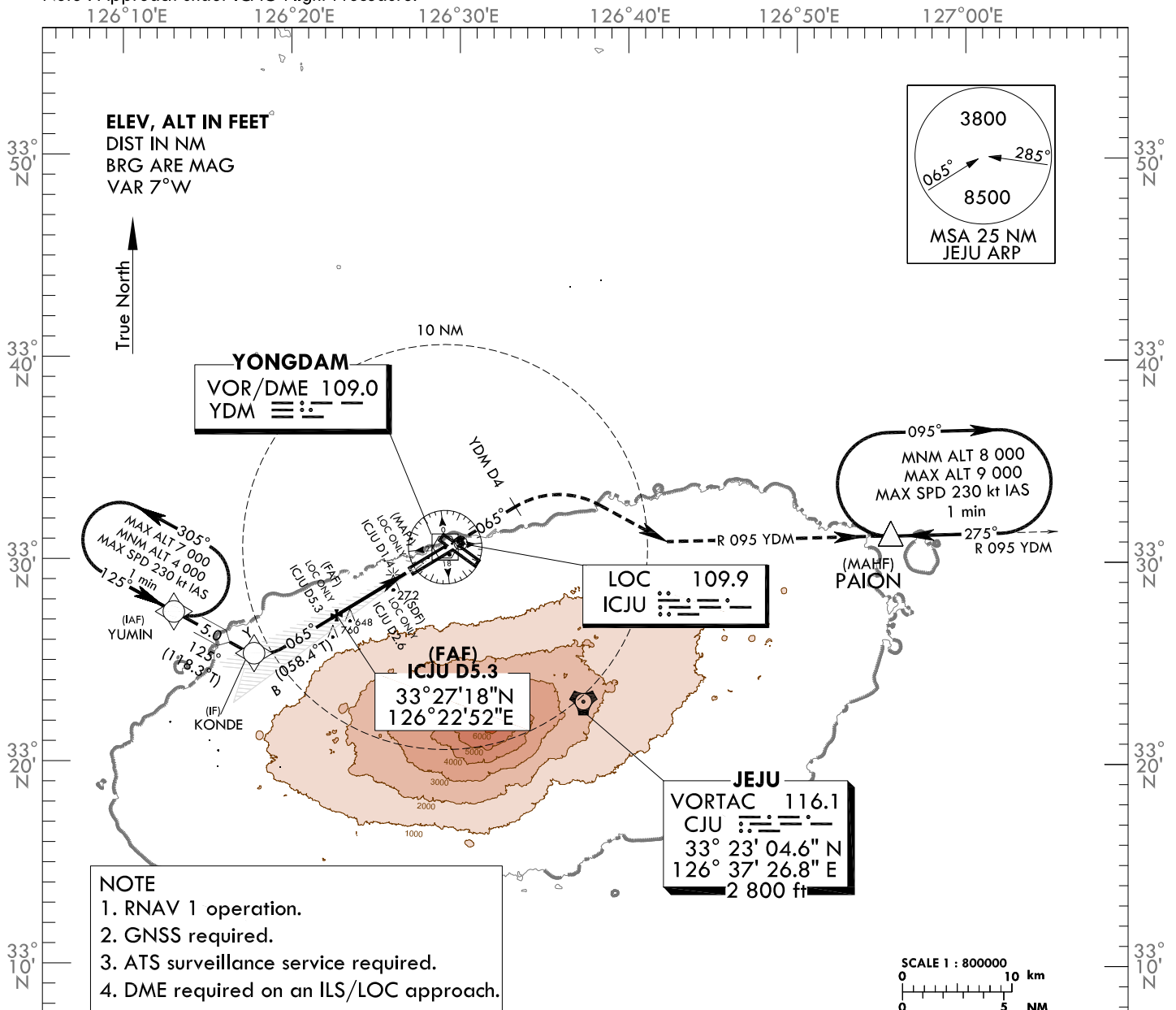
**INSTRUMENT  
APPROACH  
CHART - ICAO**

**AERODROME ELEV 119 ft**  
HEIGHTS RELATED TO  
THR RWY 07 - ELEV 87 ft

|          |         |
|----------|---------|
| JEJU APP | 121.2   |
|          | 124.05  |
| JEJU TWR | 118.125 |
|          | 118.2   |

**JEJU/Jeju Intl(RKPC)**  
**ILS Z or LOC Z RWY 07**  
**CAT II**

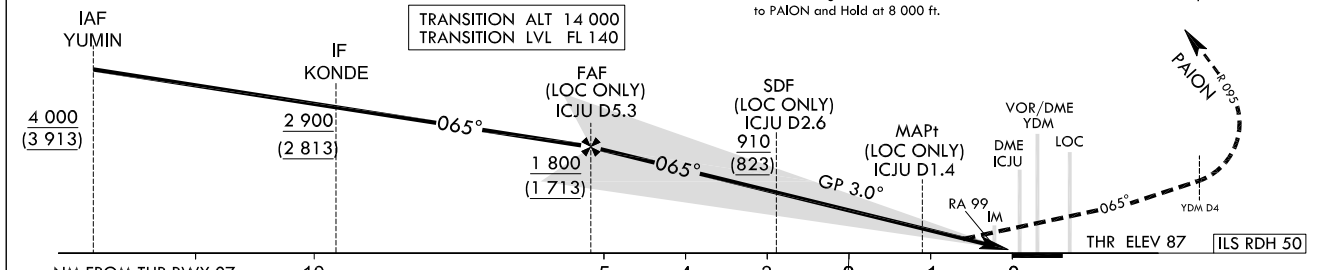
Note : Approach under ICAO Flight Procedure.



**NOTE**  
1. RNAV 1 operation.  
2. GNSS required.  
3. ATS surveillance service required.  
4. DME required on an ILS/LOC approach.

| RECOMMENDED PROFILE(LOC ONLY)            | DME ICJU | 5                | 4                | 3              | 2            | 1.4          |
|--|----------|------------------|------------------|----------------|--------------|--------------|
| Final Approach Gradient 5.32%, 323 ft/NM | ALT(HGT) | 1 690<br>(1 603) | 1 367<br>(1 280) | 1 044<br>(957) | 721<br>(634) | 530<br>(443) |

**MISSED APPROACH**  
Climb straight ahead until YDM D4 then turn RIGHT turn to intercept RDL 095 YDM to PAION and Hold at 8 000 ft.



| CATEGORY | DA(DH)/MDA(MDH) | A        | B     | C                    | D           | DL | Knots |     |     |     |     |     |
|----------|-----------------|----------|-------|----------------------|-------------|----|-------|-----|-----|-----|-----|-----|
|          |                 |          |       |                      |             |    | 60    | 90  | 120 | 150 | 180 |     |
| STA      | CAT-1           | FULL     | 287   | RVR 550 m, VIS 750 m |             |    |       | 318 | 478 | 637 | 796 | 955 |
|          |                 | ALS INOP | (200) |                      |             |    |       |     |     |     |     |     |
|          | LOC             | FULL     | 530   | 1 200 m              |             |    |       |     |     |     |     |     |
|          |                 | ALS INOP | (443) | 1 600 m              |             |    |       |     |     |     |     |     |
| CAT-II   |                 | 187(100) | 300 m |                      | 300 m/350 m |    |       |     |     |     |     |     |

1) For CAT D/DL aeroplane conducting an autoland.  
\* Timing Not authorized for defining MAPt.  
\* Circling Not authorized.

Change : Information of TWR frequency.

JEJU/Intl(RKPC)  
ILS Z or LOC Z RWY 07  
CAT II

**AERONAUTICAL DATA TABULATION**

| ILS/LOC Approach to RWY 07 from YUMIN (IAF) |                          |                              |
|---|--------------------------|------------------------------|
| Fix/point                                   |                          | Coordinates                  |
| YUMIN (IAF)                                 |                          | 33°27'25.7"N 126°13'15.5"E   |
| KONDE (IF)                                  |                          | 33°25'03.0"N 126°18'31.0"E   |
| 5.3D ICJU (FAP)                             | - BRG 65.21°/5.34NM ICJU | 33°27'17.6"N 126°22'51.8"E   |
| 2.6D ICJU (SDF LOC only)                    | - BRG 65.21°/2.60NM ICJU | 33°28'43.8"N 126°25'39.3"E   |
| 1.4D ICJU (MAPt LOC only)                   | - BRG 65.21°/1.40NM ICJU | 33°29'21.6"N 126°26'52.7"E   |
| THR RWY 07                                  |                          | 33°29'59.57"N 126°28'06.50"E |
| DME ICJU                                    |                          | 33°30'09.0"N 126°28'15.7"E   |
| YDM VOR/DME                                 |                          | 33°30'41.3"N 126°29'15.3"E   |
| 4D YDM                                      | - BRG 65.21°/4.00NM YDM  | 33°32'42.4"N 126°33'23.4"E   |
| PAION                                       | - BRG 95.00°/22.00NM YDM | 33°31'18.0"N 126°55'34.0"E   |

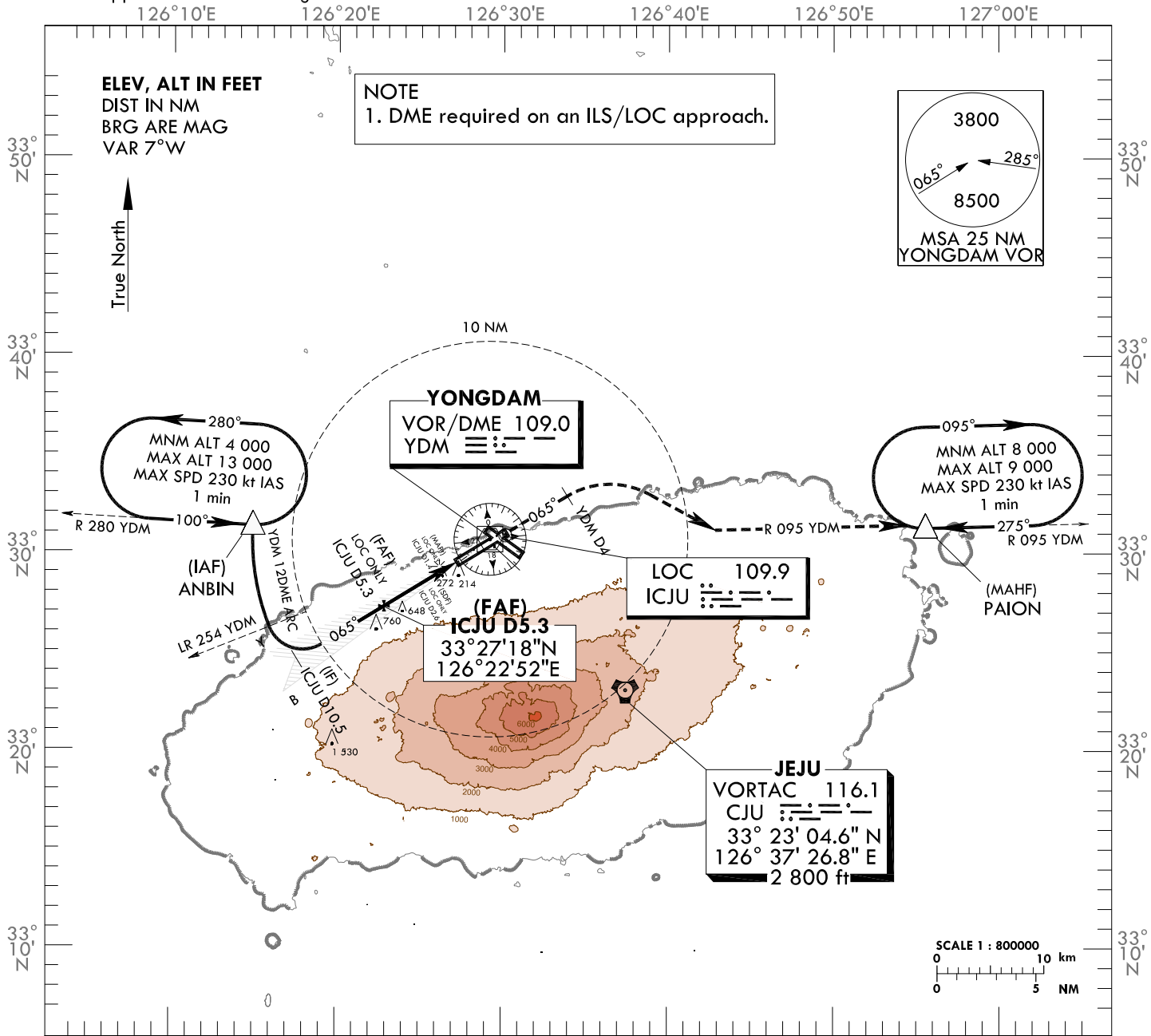
**INSTRUMENT  
APPROACH  
CHART - ICAO**

**AERODROME ELEV 119 ft**  
HEIGHTS RELATED TO  
THR RWY 07 - ELEV 87 ft

JEJU APP 121.2  
124.05  
JEJU TWR 118.125  
118.2

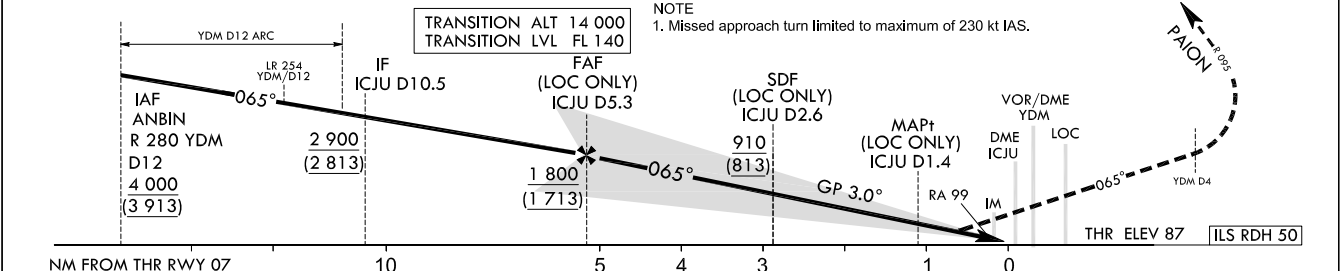
**JEJU/Jeju Intl(RKPC)**  
**ILS Y or LOC Y RWY 07**  
**CAT II**

Note : Approach under ICAO Flight Procedure.



| RECOMMENDED PROFILE(LOC ONLY)            | DME ICJU | 5       | 4       | 3     | 2     | 1.4   |
|--|----------|---------|---------|-------|-------|-------|
| Final Approach Gradient 5.32%, 323 ft/NM | ALT(HGT) | 1 690   | 1 367   | 1 044 | 721   | 530   |
|  |          | (1 603) | (1 280) | (957) | (634) | (443) |

**MISSED APPROACH**  
Climb straight ahead until YDM D4 then RIGHT turn to intercept RDL 095 YDM to PAION and Hold at 8 000 ft.



| CATEGORY | DA(DH)/MDA(MDH) | RVR 550 m, VIS 750 m |                      |   |   |                            | Rate of descent |         |     |     |     |     |     |
|----------|-----------------|----------------------|----------------------|---|---|----------------------------|-----------------|---------|-----|-----|-----|-----|-----|
|          |                 | A                    | B                    | C | D | DL                         | Knots           | 60      | 90  | 120 | 150 | 180 |     |
| STA      | CAT-1           | FULL                 | RVR 550 m, VIS 750 m |   |   |                            |                 | V/V fpm | 318 | 478 | 637 | 796 | 955 |
|          |                 | ALS INOP             | 1 200 m              |   |   |                            |                 |         |     |     |     |     |     |
|          | LOC             | FULL                 | 1 600 m              |   |   |                            |                 |         |     |     |     |     |     |
|          |                 | ALS INOP             | 2 300 m              |   |   |                            |                 |         |     |     |     |     |     |
| CAT-II   |                 | 187(100)             | 300 m                |   |   | 300 m <sup>1)</sup> /350 m |                 |         |     |     |     |     |     |

1) For CAT D/DL aeroplane conducting an autoland.  
\* Timing Not authorized for defining MAPt.  
\* Circling Not authorized.

Change : Information of TWR frequency.

JEJU/Intl(RKPC)  
ILS Y or LOC Y RWY 07  
CAT II

**AERONAUTICAL DATA TABULATION**

| ILS/LOC Approach to RWY 07 from ANBIN (IAF) |                           |                              |
|---|---------------------------|------------------------------|
| Fix/point                                   |                           | Coordinates                  |
| ANBIN (IAF)                                 | - 12DME ARC /12.00NM YDM  | 33°31'21.5"N 126°14'55.3"E   |
| 10.5D ICJU (IF)                             | - BRG 65.21°/10.50NM ICJU | 33°24'35.0"N 126°17'36.8"E   |
| 5.3D ICJU (FAP)                             | - BRG 65.21°/5.34NM ICJU  | 33°27'17.6"N 126°22'51.8"E   |
| 2.6D ICJU (SDF LOC only)                    | - BRG 65.21°/2.60NM ICJU  | 33°28'43.8"N 126°25'39.3"E   |
| 1.4D ICJU (MAPt LOC only)                   | - BRG 65.21°/1.40NM ICJU  | 33°29'21.6"N 126°26'52.7"E   |
| THR RWY 07                                  |                           | 33°29'59.57"N 126°28'06.50"E |
| DME ICJU                                    |                           | 33°30'09.0"N 126°28'15.7"E   |
| YDM VOR/DME                                 |                           | 33°30'41.3"N 126°29'15.3"E   |
| 4D YDM                                      | - BRG 65.21°/4.00NM YDM   | 33°32'42.4"N 126°33'23.4"E   |
| PAION                                       | - BRG 95.00°/22.00NM YDM  | 33°31'18.0"N 126°55'34.0"E   |

**INSTRUMENT  
APPROACH  
CHART - ICAO**

**AERODROME ELEV 119 ft**  
HEIGHTS RELATED TO  
THR RWY 07 - ELEV 87 ft

JEJU APP 121.2  
124.05  
JEJU TWR 118.125  
118.2

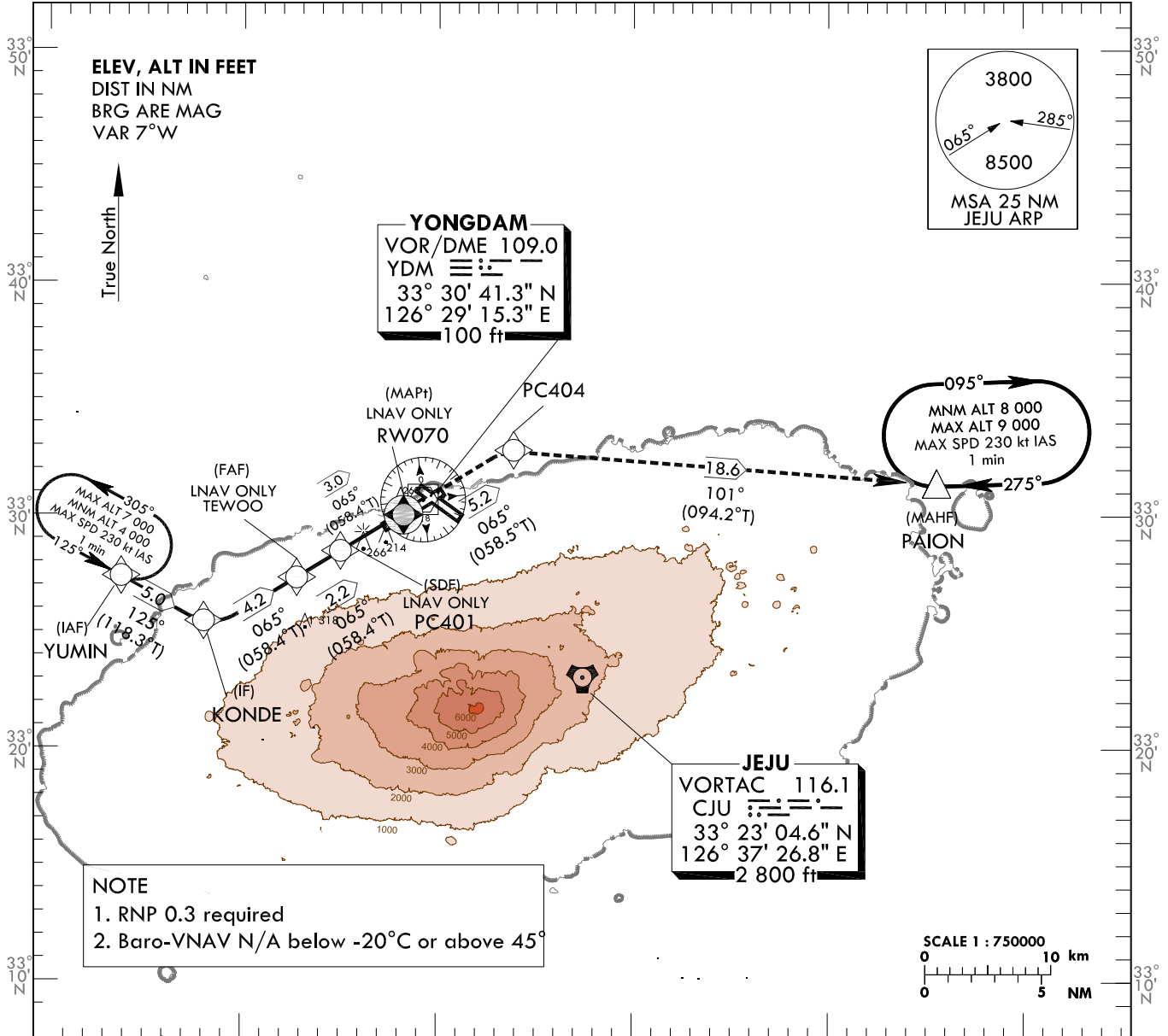
**JEJU/Jeju Intl(RKPC)  
RNAV(GNSS) RWY 07**

Note : Approach under ICAO Flight Procedure.

126°30'E

126°50'E

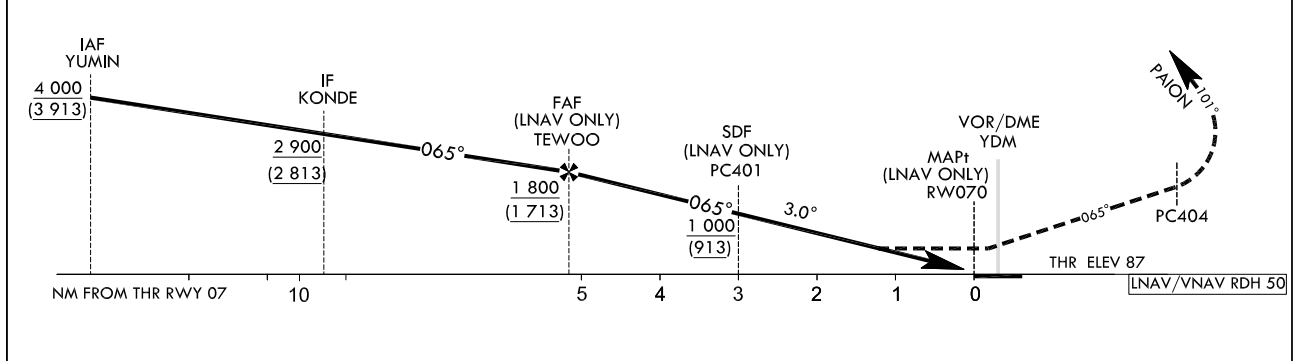
127°00'E



TRANSITION ALT 14 000  
TRANSITION LVL FL 140

**MISSED APPROACH**

Climb to 8 000 ft on track of 065° to PC404, then RIGHT turn on track of 101° to PAION.



| CATEGORY |           | DA(H)/MDA(H) | A         | B       | C       | D   | Knots                      |  |     |     |     |     |
|----------|-----------|--------------|-----------|---------|---------|-----|----------------------------|--|-----|-----|-----|-----|
| STA      | LNAV/VNAV | FULL         | 500 (413) |         | 1 200 m |     | Rate of descent<br>V/V fpm | 60   | 90  | 120 | 150 | 180 |
|          |           | ALS INOP     |           | 1 900 m |         | 318 |                            | 478  | 637 | 796 | 955 |     |
|          | LNAV      | FULL         | 540 (453) |         | 1 400 m |     |                            | * Timing Not authorized for defining MAPt.<br>* Circling Not authorized. |     |     |     |     |
|          |           | ALS INOP     |           | 2 100 m |         |     |                            |  |     |     |     |     |

Change : Information of TWR frequency.

AERONAUTICAL DATA TABULATION

Instrument Approach Procedure Coding Tables

RNAV(GNSS) RWY 07

| Serial Number | Path Descriptor | Waypoint Identifier | Fly-over | Course/Track<br>°M(°T) | Distance (NM) | Turn direction | Altitude (ft)    | Speed (kt) | Coordinates            | VPA/TCH  | Navigation specification | Remarks                    |
|---------------|-----------------|---------------------|----------|------------------------|---------------|----------------|------------------|------------|------------------------|----------|--------------------------|----------------------------|
| 001           | IF              | YUMIN               | -        | -                      | -             | -              | +4 000           | -          | 332725.7 N 1261315.5 E | -        | RNP APCH                 | IAF                        |
| 002           | TF              | KONDE               | -        | 125(118.3)             | 5.0           | -              | +2 900           | -          | 332503.0 N 1261831.0 E | -        | RNP APCH                 | IF                         |
| 003           | TF              | TEWOO               | -        | 065(058.4)             | 4.2           | -              | +1 800           | -          | 332715.3N 1262247.5 E  | -        | RNP APCH                 | FAF                        |
| 004           | TF              | PC401               | -        | 065(058.4)             | 2.2           | -              | +1 000           | -          | 332824.5 N 1262501.8 E | -        | RNP APCH                 | SDF                        |
| 005           | TF              | RW070               | Y        | 065(058.4)             | 3.0           | -              | +540             | -          | 332959.6 N 1262806.5 E | -3.00/50 | RNP APCH                 | MAPt                       |
| 006           | TF              | PC404               | -        | 065(058.5)             | 5.2           | -              | -                | -          | 333242.3 N 1263323.4 E | -        | RNP APCH                 | -                          |
| 007           | TF              | PAION               | Y        | 101(094.2)             | 18.6          | -              | -                | -          | 333118.0 N 1265534.0 E | -        | RNP APCH                 | -                          |
| 008           | HM              | PAION               | Y        | 275(268.2)             | -             | R              | -9 000<br>+8 000 | -230       | 333118.0 N 1265534.0 E | -        | RNP APCH                 | 1 min<br>(Outbound timing) |

HOLDING PROCEDURE

| Holding Identification | Path Descriptor | Waypoint Identifier | Fly-over | Course/Track<br>°M(°T) | Time (min) | Turn direction | Altitude (ft)    | Speed (kt) | Coordinates            | VPA/TCH | Navigation specification | Remarks |
|------------------------|-----------------|---------------------|----------|------------------------|------------|----------------|------------------|------------|------------------------|---------|--------------------------|---------|
| RNAV(GNSS) RWY 07      | HM              | YUMIN               | Y        | 125(118.3)             | 1.0        | L              | -7 000<br>+4 000 | -230       | 332725.7 N 1261315.5 E | -       | RNAV 1                   | -       |

**INSTRUMENT  
APPROACH  
CHART - ICAO**

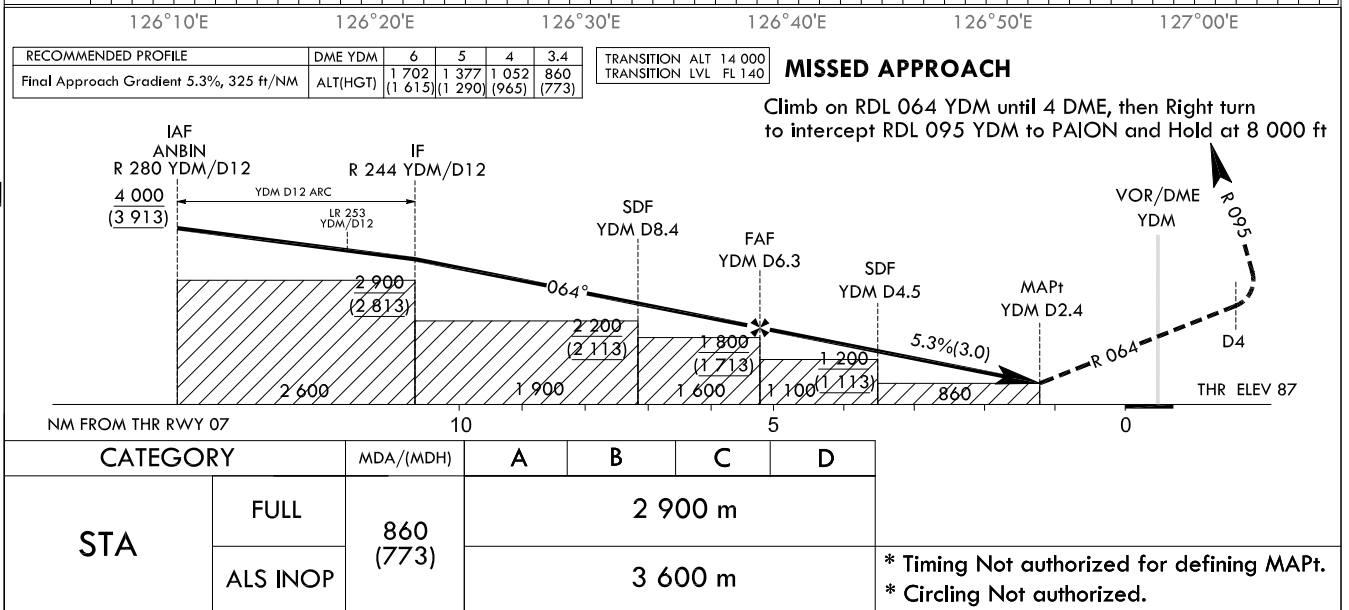
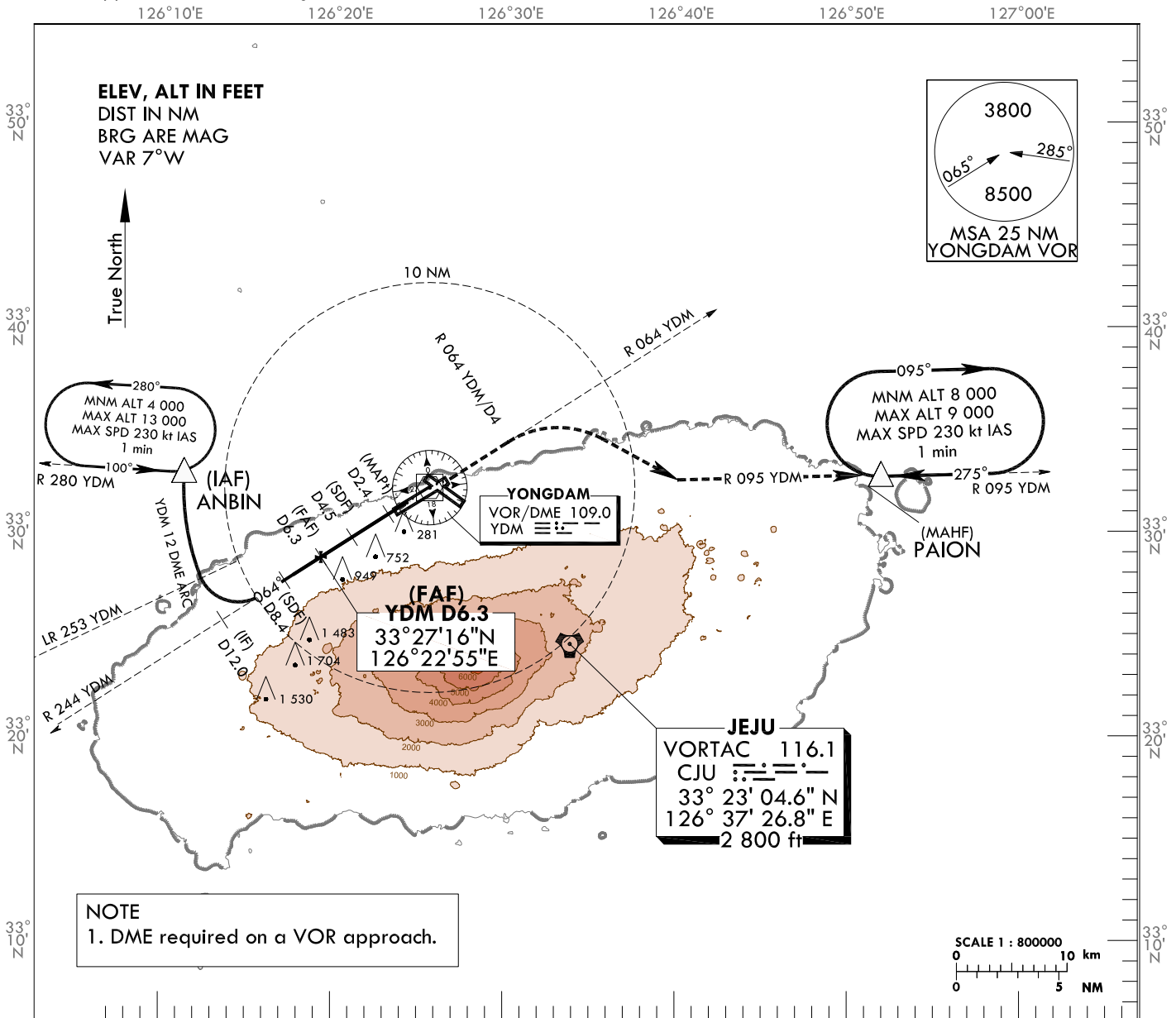
**AERODROME ELEV 119 ft**  
HEIGHTS RELATED TO  
THR RWY 07 - ELEV 87 ft

|          |         |
|----------|---------|
| JEJU APP | 121.2   |
|          | 124.05  |
| JEJU TWR | 118.125 |
|          | 118.2   |

**JEJU/Jeju Intl(RKPC)**

**VOR RWY 07**

Note : Approach under ICAO Flight Procedure.



Change : Amended phrases.

JEJU/Intl(RKPC)

VOR RWY 07

### AERONAUTICAL DATA TABULATION

| VOR Approach to RWY 07 from ANBIN (IAF) |                           |                              |
|---|---------------------------|------------------------------|
| Fix/point                               |                           | Coordinates                  |
| ANBIN (IAF)                             | - 12DME ARC /12.00NM YDM  | 33°31'21.5"N 126°14'55.3"E   |
| 12.0D YDM (IF)                          | - BRG 63.89°/12.00NM YDM  | 33°24'10.5"N 126°17'12.1"E   |
| 8.4D YDM (SDF)                          | - BRG 63.89°/8.40NM YDM   | 33°26'07.9"N 126°20'48.9"E   |
| 6.3D YDM (FAF)                          | - BRG 63.89°/6.30NM YDM   | 33°27'16.3"N 126°22'55.4"E   |
| 4.5D YDM (SDF)                          | - BRG 63.89°/4.50NM YDM   | 33°28'14.9"N 126°24'43.9"E   |
| 2.4D YDM (MAPt)                         | - BRG 63.89°/2.40NM YDM   | 33°29'23.3"N 126°26'50.6"E   |
| THR RWY 07                              |                           | 33°29'59.57"N 126°28'06.50"E |
| YDM VOR/DME                             |                           | 33°30'41.3"N 126°29'15.3"E   |
| 4D YDM                                  | - BRG 64.00°/4.00NM YDM   | 33°32'51.3"N 126°33'16.9"E   |
| PAION                                   | - BRG 172.32°/22.00NM YDM | 33°31'18.0"N 126°55'34.0"E   |



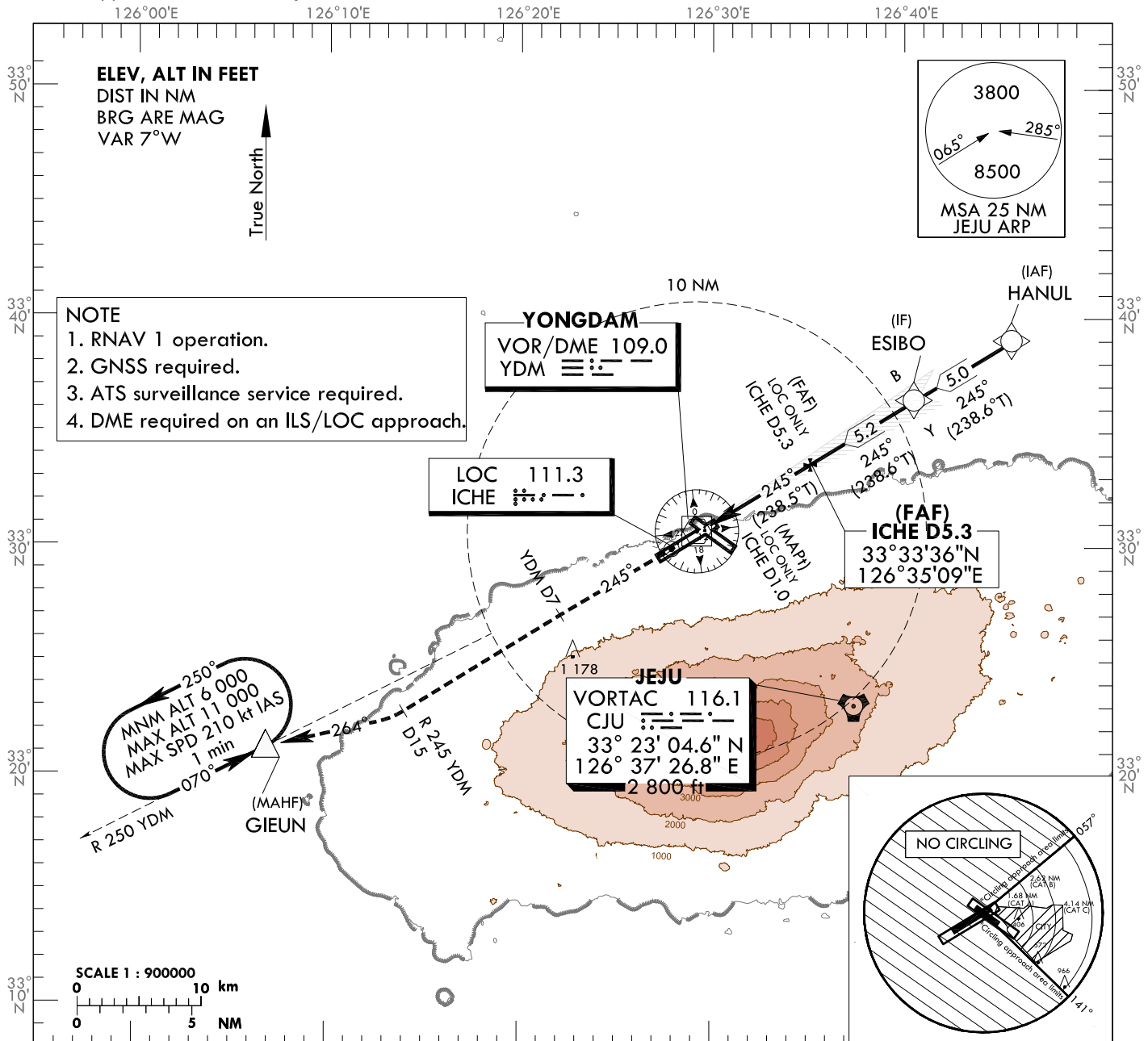
**INSTRUMENT  
APPROACH  
CHART - ICAO**

**AERODROME ELEV 119 ft**  
HEIGHTS RELATED TO  
**THR RWY 25 - ELEV 76 ft**

|          |         |
|----------|---------|
| JEJU APP | 121.2   |
|          | 124.05  |
| JEJU TWR | 118.125 |
|          | 118.2   |

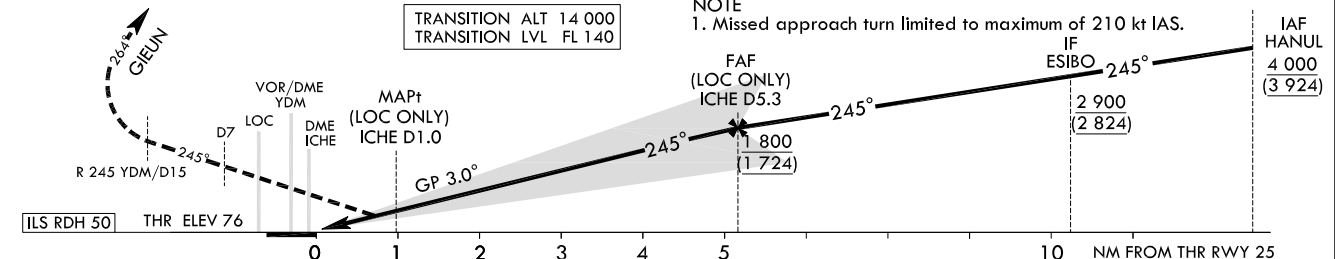
**JEJU/Jeju Intl(RKPC)**  
**ILS Z or LOC Z RWY 25**

Note : Approach under ICAO Flight Procedure.



| RECOMMENDED PROFILE(LOC ONLY)            | DME ICHE | 5                | 4                | 3              | 2            | 1.0          |
|--|----------|------------------|------------------|----------------|--------------|--------------|
| Final Approach Gradient 5.32%, 323 ft/NM | ALT(HGT) | 1 691<br>(1 615) | 1 368<br>(1 292) | 1 045<br>(969) | 722<br>(646) | 400<br>(324) |

**MISSED APPROACH**  
Climb straight ahead until YDM D7 to intercept RDL 245 YDM/D15, turn RIGHT heading 264 to GIEUN and Hold at 6 000 ft  
NOTE  
1. Missed approach turn limited to maximum of 210 kt IAS.



| CATEGORY | DA(DH)/MDA(MDH) | A        |                      |  |  |  | B     |                      |  |  |  | C     |                          |  |  |  | D     |         |  |  |  | DL    |   |    |    |     |     |                 |         |    |    |     |     |     |
|----------|-----------------|----------|----------------------|--|--|--|-------|----------------------|--|--|--|-------|--------------------------|--|--|--|-------|---------|--|--|--|-------|---|----|----|-----|-----|-----------------|---------|----|----|-----|-----|-----|
|          |                 | Knots    |                      |  |  |  | Knots |                      |  |  |  | Knots |                          |  |  |  | Knots |         |  |  |  | Knots |   |    |    |     |     |                 |         |    |    |     |     |     |
| STA      | CAT-1           | FULL     | 276                  |  |  |  |       | 750 m                |  |  |  |       | 1 200 m                  |  |  |  |       | 1 200 m |  |  |  |       | 1 200 m   |    |    |     |     | Rate of descent | V/V fpm | 60 | 90 | 120 | 150 | 180 |
|          |                 | ALS INOP | (200)                |  |  |  |       | 1 200 m              |  |  |  |       | 1 200 m                  |  |  |  |       | 1 200 m |  |  |  |       |   |    |    |     |     |                 |         |    |    |     |     |     |
| STA      | LOC             | FULL     | 400                  |  |  |  |       | 1 200 m              |  |  |  |       | 1 200 m                  |  |  |  |       | 1 200 m |  |  |  |       | * Timing Not authorized for defining MAPt.<br>* MDH for Circling related to aerodrome ELEV 119 ft | 60 | 90 | 120 | 150 | 180             |         |    |    |     |     |     |
|          |                 | ALS INOP | (324)                |  |  |  |       | 1 200 m              |  |  |  |       | 1 200 m                  |  |  |  |       | 1 200 m |  |  |  |       |   |    |    |     |     |                 |         |    |    |     |     |     |
| Circling |                 |          | 790 (671)<br>3 100 m |  |  |  |       | 890 (771)<br>3 600 m |  |  |  |       | 1 380 (1 261)<br>5 000 m |  |  |  |       | N/A     |  |  |  |       |   |    |    |     |     |                 |         |    |    |     |     |     |

Change : Information of TWR frequency.

JEJU/Jeju Intl(RKPC)  
ILS Z or LOC Z RWY 25

**AERONAUTICAL DATA TABULATION**

| ILS/LOC Approach to RWY 25 from HANUL (IAF) |                           |                              |
|---|---------------------------|------------------------------|
| Fix/point                                   |                           | Coordinates                  |
| HANUL (IAF)                                 |                           | 33°38'58.6"N 126°45'38.8"E   |
| ESIBO (IF)                                  | - BRG 245.35°/5.00NM      | 33°36'21.9"N 126°40'32.2"E   |
| 5.3D ICHE (FAP)                             | - BRG 245.23°/5.34NM ICHE | 33°33'36.4"N 126°35'08.7"E   |
| 1.0D ICHE (MAPt LOC only)                   | - BRG 245.23°/1.00NM ICHE | 33°31'20.0"N 126°30'43.0"E   |
| THR RWY 25                                  |                           | 33°30'53.56"N 126°29'51.51"E |
| DME ICHE                                    |                           | 33°30'52.1"N 126°29'39.4"E   |
| YDM VOR/DME                                 |                           | 33°30'41.3"N 126°29'15.3"E   |
| 7.0D YDM                                    | - BRG 245.23°/7.00NM YDM  | 33°26'59.7"N 126°22'08.6"E   |
| 15.0D YDM                                   | - BRG 244.94°/15.00NM YDM | 33°22'45.9"N 126°14'01.5"E   |
| GIEUN                                       | - BRG 263.84°/21.00NM YDM | 33°21'11.1"N 126°06'52.2"E   |

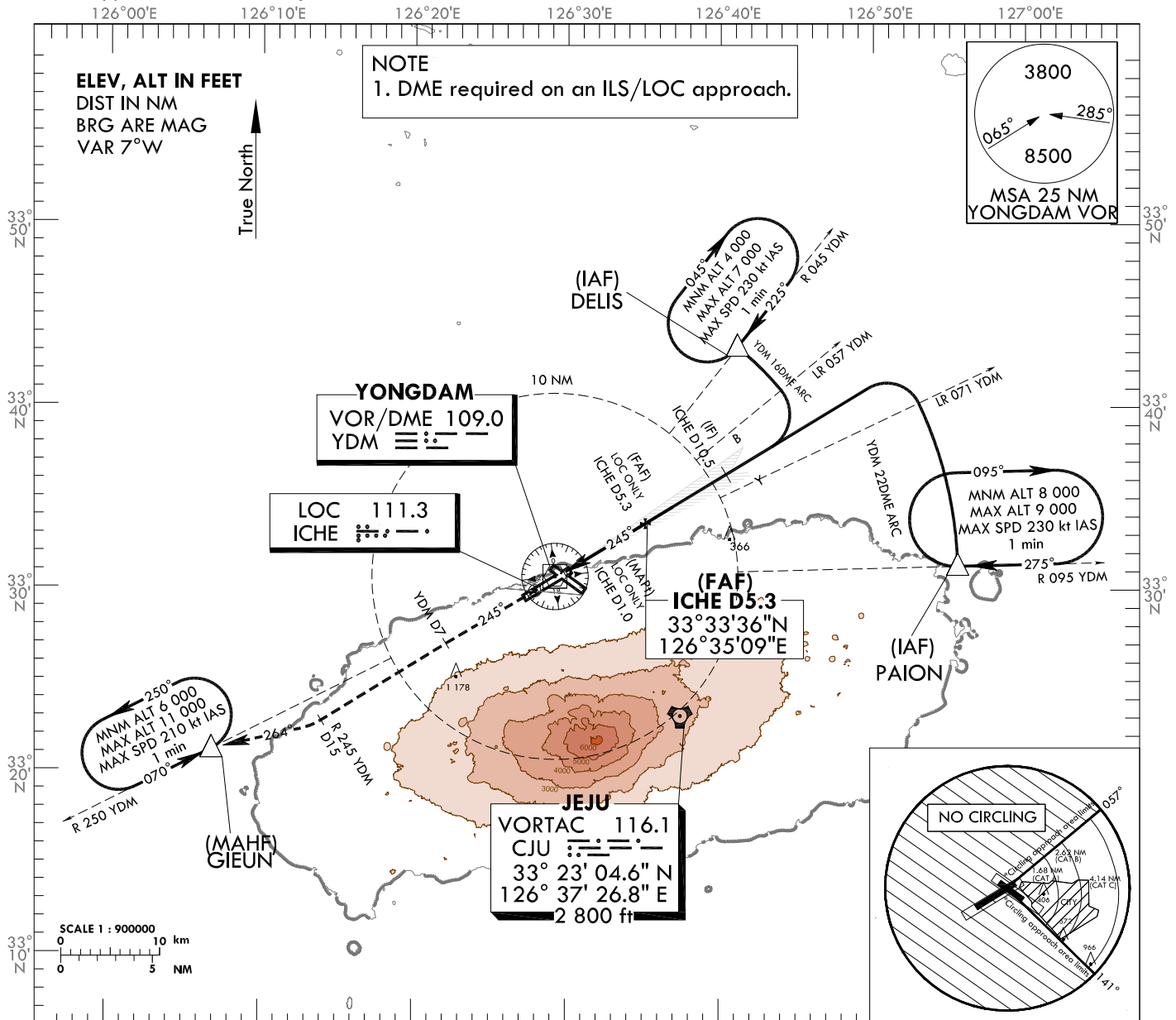
**INSTRUMENT  
APPROACH  
CHART - ICAO**

**AERODROME ELEV 119 ft**  
HEIGHTS RELATED TO  
THR RWY 25 - ELEV 76 ft

JEJU APP 121.2  
124.05  
JEJU TWR 118.125  
118.2

**JEJU/Jeju Intl(RKPC)**  
**ILS Y or LOC Y RWY 25**

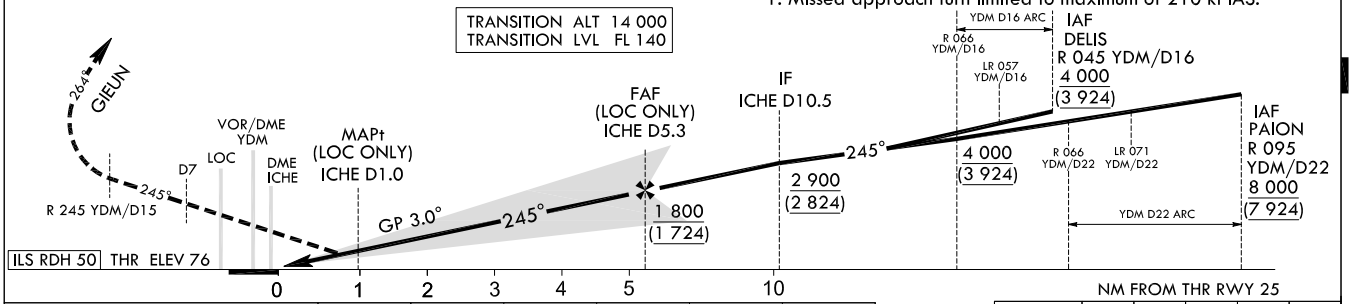
Note : Approach under ICAO Flight Procedure.



SCALE 1 : 900000  
0 10 km  
0 5 NM

| RECOMMENDED PROFILE(LOC ONLY)            |  | DME ICHE | 5                | 4                | 3              | 2            | 1.0          |
|--|--|----------|------------------|------------------|----------------|--------------|--------------|
| Final Approach Gradient 5.32%, 323 ft/NM |  | ALT(HGT) | 1 691<br>(1 615) | 1 368<br>(1 292) | 1 045<br>(969) | 722<br>(646) | 400<br>(324) |

**MISSED APPROACH**  
Climb straight ahead until YDM D7 to intercept RDL 245 YDM/D15  
turn RIGHT heading 264 to GIEUN and Hold at 6 000 ft.  
NOTE  
1. Missed approach turn limited to maximum of 210 kt IAS.



| CATEGORY | DA(DH)/MDA(MDH) | NM FROM THR RWY 25 |                      |                      |                          |     | Rate of descent<br>V/V fpm  | Knots | 60  | 90  | 120 | 150 | 180 |
|----------|-----------------|--------------------|----------------------|----------------------|--------------------------|-----|---|-------|-----|-----|-----|-----|-----|
|          |                 | A                  | B                    | C                    | D                        | DL  |   |       |     |     |     |     |     |
| STA      | CAT-1           | FULL               | 750 m                |                      |                          |     |   | 318   | 478 | 637 | 796 | 955 |     |
|          |                 | ALS INOP           | 1 200 m              |                      |                          |     |   |       |     |     |     |     |     |
| LOC      | FULL            | 1 200 m            |                      |                      |                          |     | * Timing Not authorized for defining MAPt.<br>* MDH for Circling related to aerodrome ELEV 119 ft |       |     |     |     |     |     |
|          | ALS INOP        | 1 600 m            |                      |                      |                          |     |   |       |     |     |     |     |     |
| Circling |                 |                    | 790 (671)<br>3 100 m | 890 (771)<br>3 600 m | 1 380 (1 261)<br>5 000 m | N/A |   |       |     |     |     |     |     |

Change : Amended phrases.

### AERONAUTICAL DATA TABULATION

| ILS/LOC Approach to RWY 25 from DELIS (IAF) or PAION (IAF) |                            |                              |
|--|----------------------------|------------------------------|
| Fix/point  |                            | Coordinates                  |
| DELIS (IAF)  | - 16DME ARC /16.00NM YDM   | 33°43'16.2"N 126°41'08.0"E   |
| PAION (IAF)  | - 22DME ARC /22.00NM YDM   | 33°31'18.0"N 126°55'34.0"E   |
| 10.5D ICHE (IF)  | - BRG 245.35°/10.50NM ICHE | 33°36'18.2"N 126°40'24.9"E   |
| 5.3D ICHE (FAP)  | - BRG 245.23°/5.34NM ICHE  | 33°33'36.4"N 126°35'08.7"E   |
| 1.0D ICHE (MAPt LOC only)                                  | - BRG 245.23°/1.00NM ICHE  | 33°31'20.0"N 126°30'43.0"E   |
| THR RWY 25   |                            | 33°30'53.56"N 126°29'51.51"E |
| DME ICHE   |                            | 33°30'52.1"N 126°29'39.4"E   |
| YDM VOR/DME  |                            | 33°30'41.3"N 126°29'15.3"E   |
| 7.0D YDM   | - BRG 245.23°/7.00NM YDM   | 33°26'59.7"N 126°22'08.6"E   |
| 15.0D YDM  | - BRG 244.94°/15.00NM YDM  | 33°22'45.9"N 126°14'01.5"E   |
| GIEUN  | - BRG 263.84°/21.00NM YDM  | 33°21'11.1"N 126°06'52.2"E   |

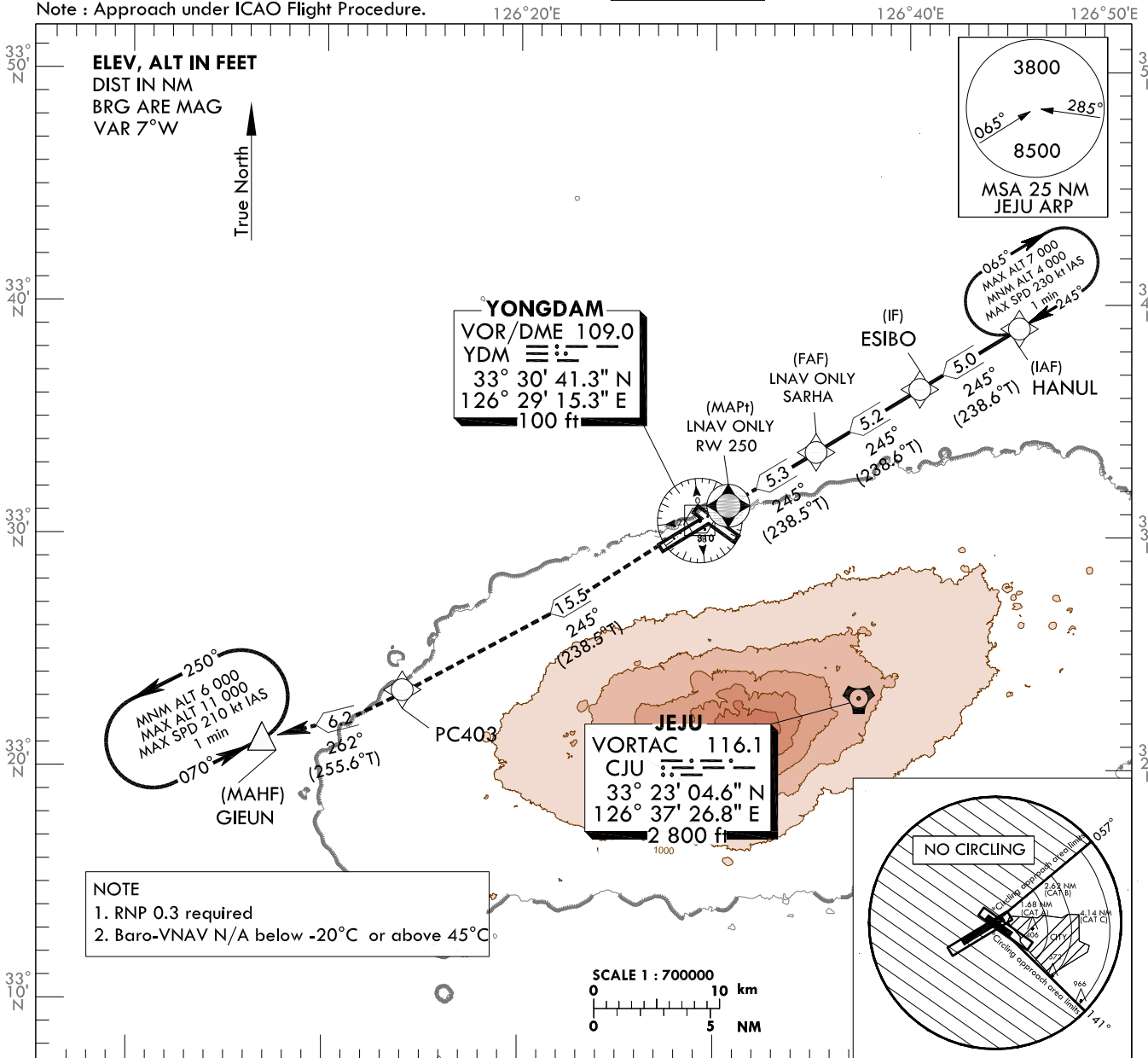
**INSTRUMENT APPROACH CHART - ICAO**

**AERODROME ELEV 119 ft**  
HEIGHTS RELATED TO  
THR RWY 25 - ELEV 76 ft

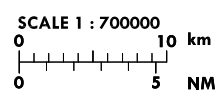
JEJU APP 121.2  
124.05  
JEJU TWR 118.125  
118.2

**JEJU/Jeju Intl(RKPC)**  
**RNAV(GNSS) RWY 25**

Note : Approach under ICAO Flight Procedure.

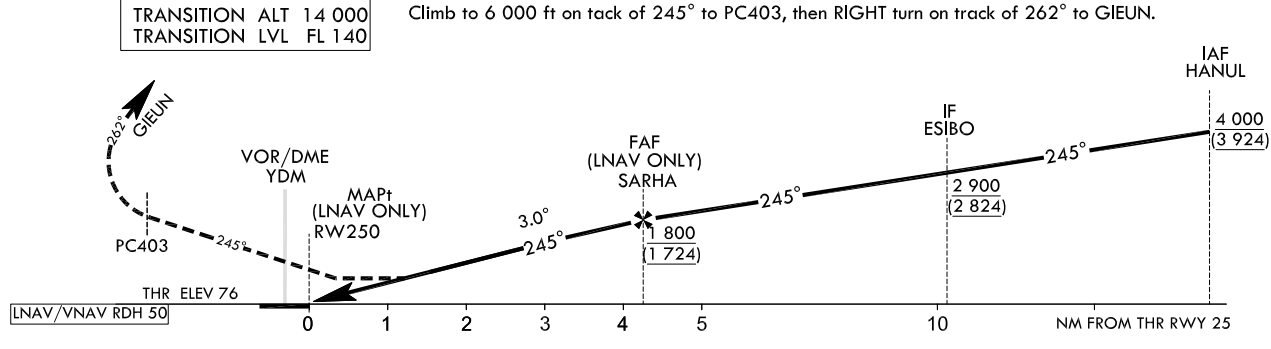


**NOTE**  
1. RNP 0.3 required  
2. Baro-VNAV N/A below -20°C or above 45°C



**MISSED APPROACH**

Climb to 6 000 ft on track of 245° to PC403, then RIGHT turn on track of 262° to GIEUN.



| CATEGORY |            | DA(H)/MDA(H) | A                    | B                    | C                        | D   | Knots |   |         |     |     |     |     |     |
|----------|------------|--------------|----------------------|----------------------|--------------------------|-----|-------|---|---------|-----|-----|-----|-----|-----|
| STA      | LNNAV/VNAV | FULL         | 490                  | 1 500 m              |                          |     |       | Rate of descent   | V/V fpm | 319 | 478 | 637 | 797 | 956 |
|          |            | ALS INOP     | (414)                | 1 900 m              |                          |     |       |   |         |     |     |     |     |     |
|          | LNNAV      | FULL         | 520                  | 1 700 m              |                          |     |       | * Timing Not authorized for defining MAPt.<br>* MDH for Circling related to aerodrome ELEV 119 ft |         |     |     |     |     |     |
|          |            | ALS INOP     | (444)                | 2 100 m              |                          |     |       |   |         |     |     |     |     |     |
| Circling |            |              | 790 (671)<br>3 100 m | 890 (771)<br>3 600 m | 1 380 (1 261)<br>5 000 m | N/A |       |   |         |     |     |     |     |     |

Change : Information of TWR frequency.

AERONAUTICAL DATA TABULATION

Instrument Approach Procedure Coding Tables

RNAV(GNSS) RWY 25

| Serial Number | Path Descriptor | Waypoint Identifier | Fly-over | Course/Track °M(T) | Distance (NM) | Turn direction | Altitude (ft)     | Speed (kt) | Coordinates            | VPA/TCH  | Navigation specification | Remarks                    |
|---------------|-----------------|---------------------|----------|--------------------|---------------|----------------|-------------------|------------|------------------------|----------|--------------------------|----------------------------|
| 001           | IF              | HANUL               | -        | -                  | -             | -              | +4 000            | -          | 333858.6 N 1264538.8 E | -        | RNP APCH                 | IAF                        |
| 002           | TF              | ESIBO               | -        | 245(238.6)         | 5.0           | -              | +2 900            | -          | 333621.9 N 1264032.2 E | -        | RNP APCH                 | IF                         |
| 003           | TF              | SARHA               | -        | 245(238.6)         | 5.2           | -              | +1 800            | -          | 333338.6 N 1263513.1 E | -        | RNP APCH                 | FAF                        |
| 004           | TF              | RW250               | Y        | 245(238.5)         | 5.3           | -              | +520              | -          | 333053.6 N 1262951.5 E | -3.00/50 | RNP APCH                 | MAPt                       |
| 005           | TF              | PC403               | -        | 245(238.5)         | 15.5          | -              | -                 | -          | 332244.4N 1261403.0 E  | -        | RNP APCH                 | -                          |
| 006           | TF              | GIEUN               | Y        | 262(255.6)         | 6.2           | -              | -                 | -          | 332111.1 N 1260652.2 E | -        | RNP APCH                 | -                          |
| 007           | HM              | GIEUN               | Y        | 070(063.2)         | -             | L              | -11 000<br>+6 000 | -210       | 332111.1 N 1260652.2 E | -        | RNP APCH                 | 1 min<br>(Outbound timing) |

HOLDING PROCEDURE

| Serial Number     | Path Descriptor | Waypoint Identifier | Fly-over | Course/Track °M(T) | TIME (min) | Turn direction | Altitude (ft)    | Speed (kt) | Coordinates            | VPA/TCH | Navigation specification | Remarks |
|-------------------|-----------------|---------------------|----------|--------------------|------------|----------------|------------------|------------|------------------------|---------|--------------------------|---------|
| RNAV(GNSS) RWY 25 | HM              | HANUL               | Y        | 245(238.6)         | 1.0        | R              | -7 000<br>+4 000 | -230       | 333858.6 N 1264538.8 E | -       | RNAV 1                   | -       |

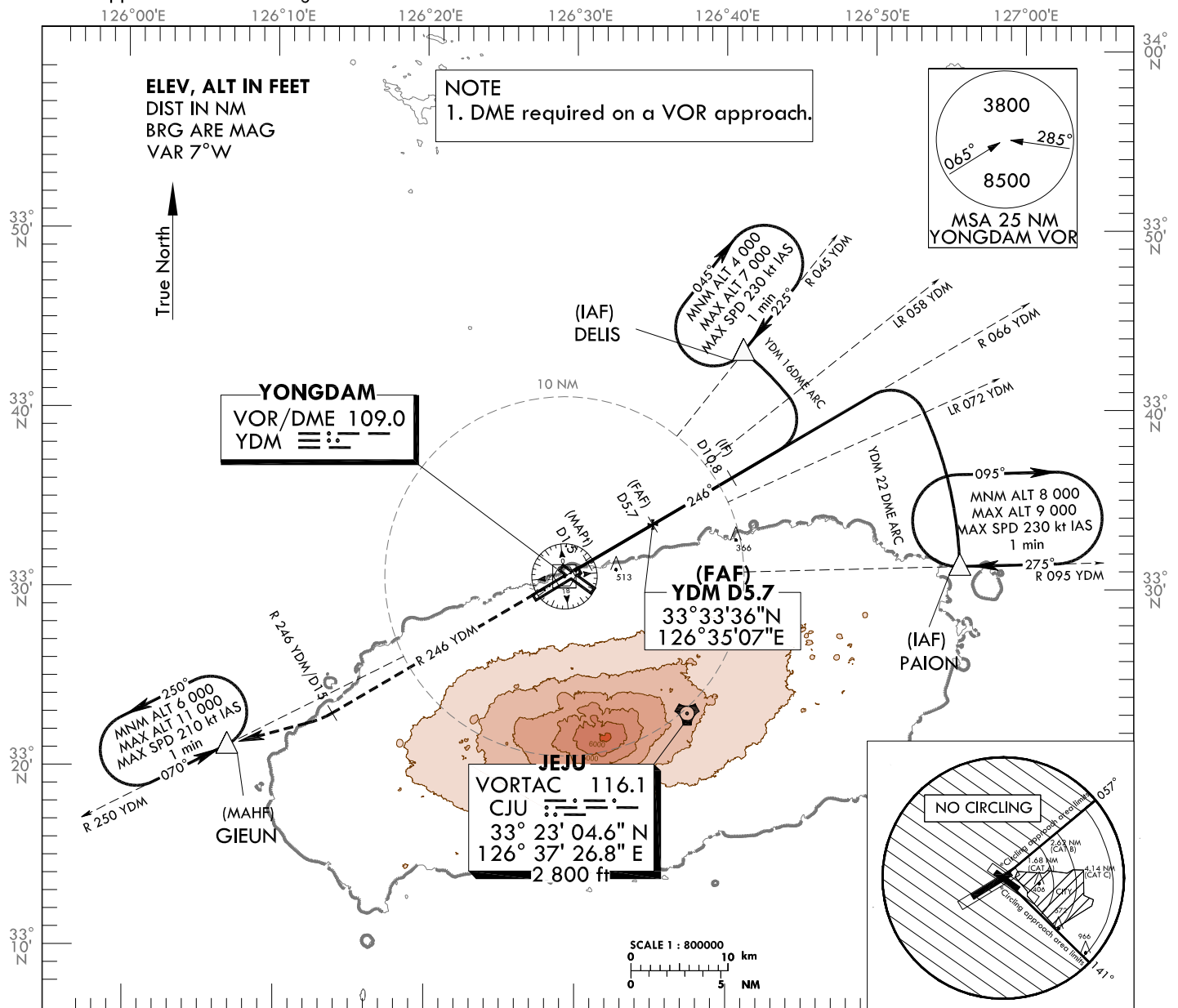
**INSTRUMENT  
APPROACH  
CHART - ICAO**

**AERODROME ELEV 119 ft**  
HEIGHTS RELATED TO  
THR RWY 25 - ELEV 76 ft

JEJU APP 121.2  
124.05  
JEJU TWR 118.125  
118.2

**JEJU/Jeju Intl(RKPC)**  
**VOR RWY 25**

Note : Approach under ICAO Flight Procedure.

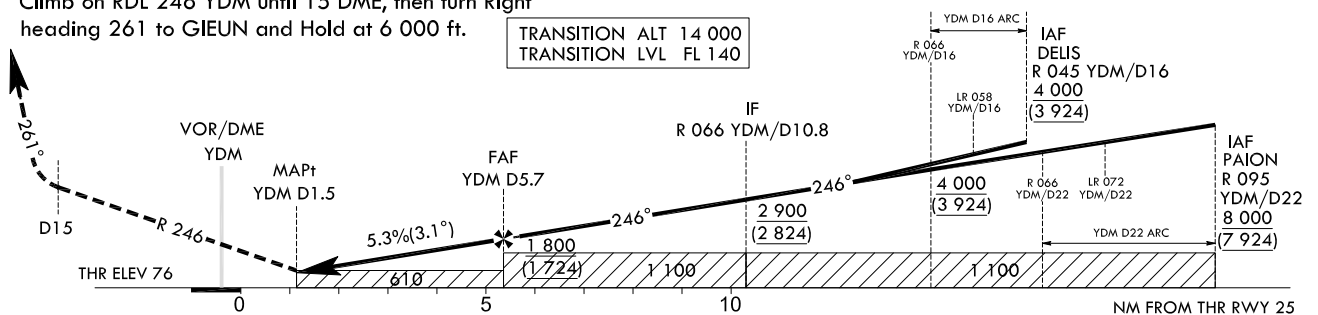


**MISSED APPROACH**

Climb on RDL 246 YDM until 15 DME, then turn Right heading 261 to GIEUN and Hold at 6 000 ft.

TRANSITION ALT 14 000  
TRANSITION LVL FL 140

| RECOMMENDED PROFILE                      | DME YDM  | 5                | 4                | 3            | 2            |
|--|----------|------------------|------------------|--------------|--------------|
| Final Approach Gradient 5.34%, 325 ft/NM | ALT(HGT) | 1 573<br>(1 497) | 1 248<br>(1 172) | 924<br>(848) | 610<br>(534) |



| CATEGORY |          | MDA(MDH)     | A                    | B                    | C                        | D   |
|----------|----------|--------------|----------------------|----------------------|--------------------------|-----|
| STA      | FULL     | 610<br>(534) | 2 000 m              |                      |                          |     |
|          | ALS INOP |              | 2 400 m              |                      |                          |     |
| Circling |          |              | 790 (671)<br>3 100 m | 890 (771)<br>3 600 m | 1 380 (1 261)<br>5 000 m | N/A |

\* Timing Not authorized for defining MAPt.  
\* MDH for Circling related to aerodrome ELEV 119 ft

Change : Amended phrases.

JEJU/Intl(RKPC)

VOR RWY 25

### AERONAUTICAL DATA TABULATION

| VOR Approach to RWY 25 from DELIS (IAF) or PAION (IAF) |                           |                              |
|--|---------------------------|------------------------------|
| Fix/point  |                           | Coordinates                  |
| DELIS (IAF)  | - 16DME ARC/16.00NM YDM   | 33°43'16.2"N 126°41'08.0"E   |
| PAION (IAF)  | - 22DME ARC/22.00NM YDM   | 33°31'18.0"N 126°55'34.0"E   |
| 10.8D YDM (IF)   | - BRG 246.10°/10.80NM YDM | 33°36'12.8"N 126°40'22.1"E   |
| 5.7D YDM (FAF)   | - BRG 246.10°/5.70NM YDM  | 33°33'36.4"N 126°35'07.1"E   |
| 1.5D YDM (MAPt)  | - BRG 246.10°/1.50NM YDM  | 33°31'27.2"N 126°30'47.4"E   |
| THR RWY 25   |                           | 33°30'53.56"N 126°29'51.51"E |
| YDM VOR/DME  |                           | 33°30'41.3"N 126°29'15.3"E   |
| 15.0D YDM  | - BRG 246.00°/15.00NM YDM | 33°22'59.4"N 126°13'51.7"E   |
| GIEUN  | - BRG 250.00°/21.00NM YDM | 33°21'11.1"N 126°06'52.2"E   |